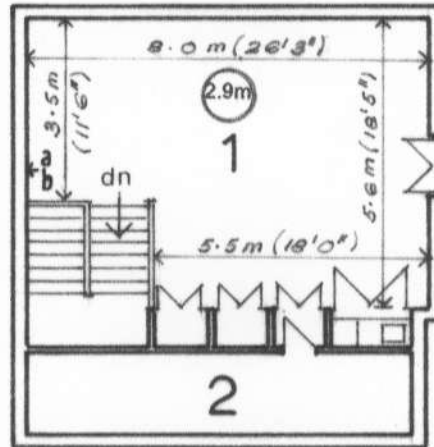
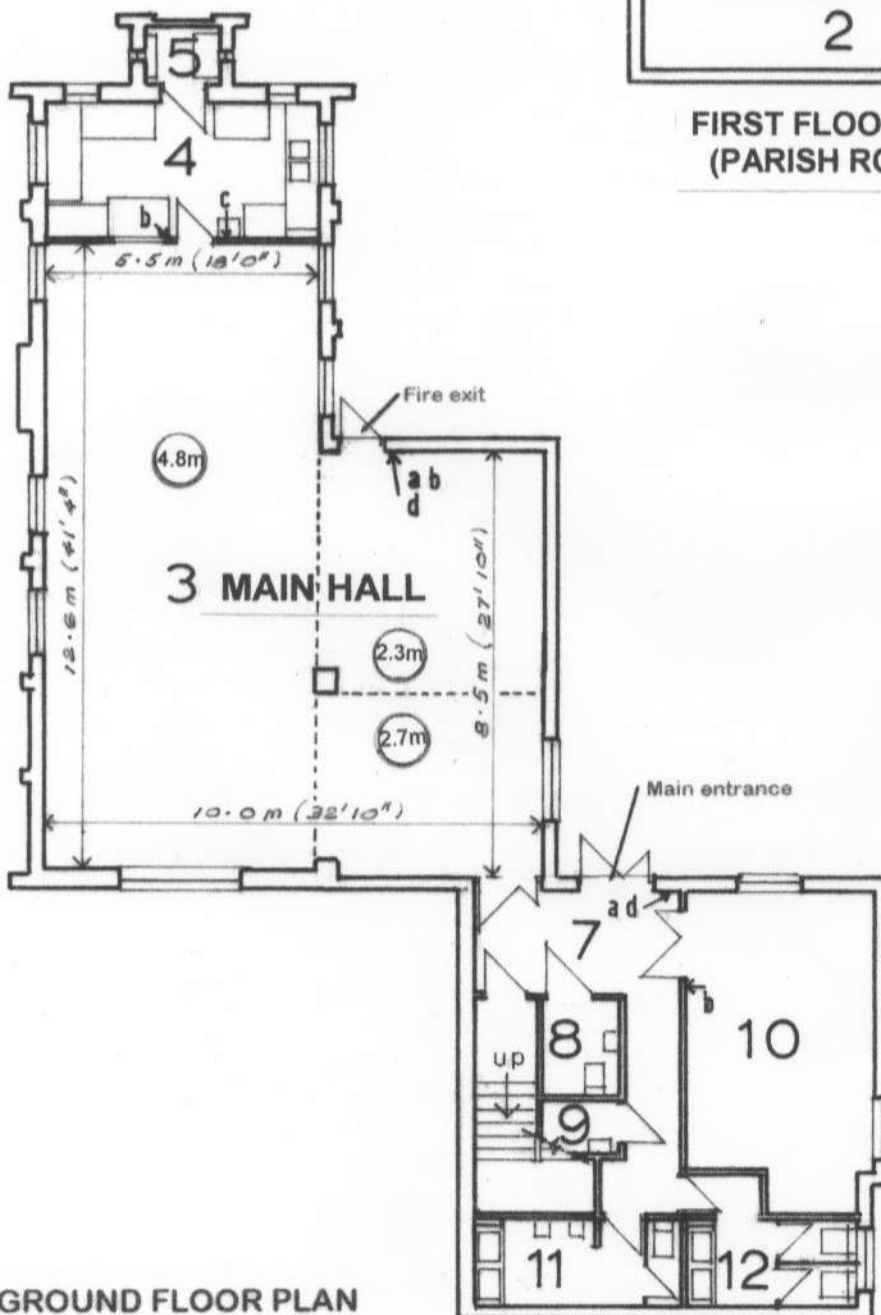


SLINFOLD VILLAGE HALL



FIRST FLOOR PLAN
(PARISH ROOM)



GROUND FLOOR PLAN

KEY

- 1 Meeting Room
- 2 Eaves storage space
- 3 Main Hall
- 4 Kitchen
- 5 Kitchen store
- 6
- 7 Main entrance lobby
- 8 Disabled toilet
- 9 Cleaners cupboard
- 10 Storeroom
- 11 Mens toilet
- 12 Womens toilet



FIRE EQUIPMENT

- a water extinguisher
- b CO₂ extinguisher
- c fire blanket
- d break-glass call point

ceiling heights in
main rooms are
indicated thus

2.9m